

# pavedrive paviers

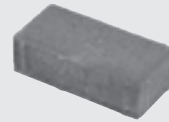
Brochure page 126, 127.

Price m<sup>2</sup>

|      |
|------|
| 50mm |
| 60mm |
| 80mm |



200 x 100 x 50mm



200 x 100 x 60mm



200 x 100 x 80mm

PaverSystems

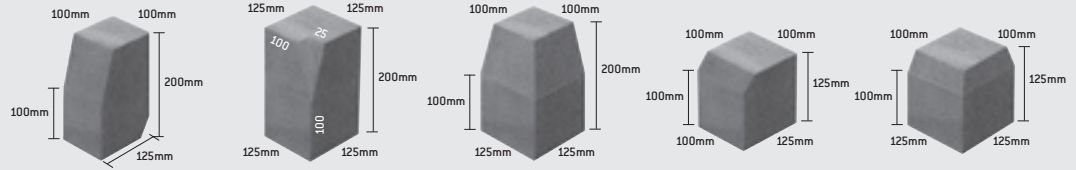
Newport

- Grey**, price each
- Buff**, price each
- Marigold**, price each
- Red**, price each
- Charcoal**, price each
- Brindle**, price each
- Burnt Ochre**, price each
- Forest Blend**, price each

|                        |                    |                    |                    |
|------------------------|--------------------|--------------------|--------------------|
|                        |                    |                    |                    |
|                        |                    |                    |                    |
|                        |                    |                    |                    |
|                        |                    |                    |                    |
|                        |                    |                    |                    |
|                        |                    |                    |                    |
|                        |                    |                    |                    |
| Pack coverage          | 9.76m <sup>2</sup> | 9.60m <sup>2</sup> | 9.36m <sup>2</sup> |
| No. per m <sup>2</sup> | 50                 | 50                 | 50                 |
| No. per pack           | 488                | 480                | 468                |
| Weight per pack        | 1074kg             | 1296kg             | 1257kg             |
| Thickness              | 50mm               | 60mm               | 60mm               |

# pavedrive kerbs

Brochure page 127.



KL Straight  
100 x 125 x 200mm

KL Internal Corner

KL External Corner

KS Straight  
100 x 125 x 125mm

KS External Corner

|                                 |        |       |       |        |
|---------------------------------|--------|-------|-------|--------|
| <b>Buff</b> , price each        |        |       |       |        |
| <b>Marigold</b> , price each    |        |       |       |        |
| <b>Red</b> , price each         |        |       |       |        |
| <b>Charcoal</b> , price each    |        |       |       |        |
| <b>Brindle</b> , price each     |        |       |       |        |
| <b>Burnt Ochre</b> , price each |        |       |       |        |
| Linear metres per pack          | 21.6   | -     | -     | 32.4   |
| No. per linear metre            | 10     | -     | -     | 10     |
| No. per pack                    | 216    | 36    | 36    | 324    |
| Weight per pack                 | 1094kg | 240kg | 240kg | 1020kg |